

# M1



02.03.2007



LUK123003920

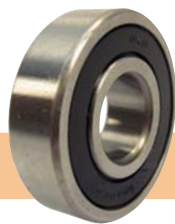


LUK323032520



LUK500004420

COMBINED HARVESTER MODEL		COMPLETE ASSEMBLY	CLUTCH PLATE	RELEASE BEARING
MASSEY FERGUSON MF16, 20, 25, MF330, 430	225 mm	LUK123003720 225 mm	LUK323032520 225 mm, 10Z	LUK500008920
MF520, 525, 620, 625			LUK328024810 V8740	
MF186, 187, 206, 307, 387, 407		LUK123002220	LUK323002526 9", 10Z	
MF240, 440, 507		LUK123007420	LUK323002526 10Z	
FAHR M660, 770, 900, 922, 1002	225 mm	LUK123003920 225 mm	LUK323032520 225 mm	LUK500008920
M60, 600, 750	200 mm		LUK320006626 200 mm	LUK500004420
CLAAS Consul 620 (55008435→55010802) Consul 622 (55010803→) Dominator 56, 66, 68, 76, 78S Dominator 80 (→86002434) Dominator 80, 85 (86002435→) Dominator 88S/SL				LUK500004720



## PILOT BEARING

**LUK410004500**

- fits: Fahr M660, 770, 900, 922, 60, 600

COMBINED HARVESTER MODEL	VARIABLE-SPEED TRANSMISSION BELT	DIMENSIONS width x height x outer length
Sampo 500, 580, 2020; MF 330, 16, 17	KHV311910	31,8 x 16,0 x 1910 La
Fahr 66, 88, 600, 660, 750, 770, 33.30, 33.60	KHV381820	38,1 x 17,5 x 1820 La
Sampo 40, 600, 680; MF 430	KHV382845	38,1 x 17,5 x 2845 La
MF186, 187, 240	KHV402630	40,0 x 18,0 x 2630 La
MF186, 187, 240, 685	KHV403000	40,0 x 18,0 x 3000 La
Sampo 500, 580, 2045, 2055	KHV441930	44,4 x 19,8 x 1930 La
MF 206, 240	KHV442222	44,4 x 19,8 x 2222 La
Sampo 10, 20, 30 Kela	KHV501600	50,0 x 20,0 x 1600 La
Sampo 40, 600, 680; MF 430 Kela	KHV502642	50,8 x 22,2 x 2642 La

M1.01

02.03.2007



COMBINED HARVESTER MODEL	ENGINE TYPE	OIL FILTER	FUEL FILTER	AIR FILTER
<b>Challenger 35, 45, 55 (1/97→)</b>	<b>Cat.3116ATAAC Cat.3126ATAAC</b>	TF4094		
<b>Columbus, Columbus D</b>	<b>Perkins 4.99</b>	TF5009	TF7004 or TF7022 TF8018	
<b>Columbus D</b>	<b>Deutz F4L812, Deutz F4L912</b>	TF4501	TF6054 or TF7022 TF8018	
<b>Commandor/Dominator 112 CS</b>	<b>Perkins V8.540</b>	TF4085	TFCAV296 MPCAV296	TF2197 TF2197-2 (z)
<b>Commandor/Dominator 114 CS</b>	<b>DB OM 421</b>	TF5168	TF8016	TF2197 TF2197-2 (z)
<b>Commandor/Dominator 114 CS</b>	<b>DB OM 401.901</b>	TF5168	TF8016	TF2197 TF2197-2 (z)
<b>Commandor/Dominator 115 CS</b>	<b>DB OM 421A</b>	TF5168	TF8016	TF2156 TF2156-2 (z)
<b>transmission</b>		TF4309 (q)		
<b>Commandor/Dominator 116 CS</b>	<b>DB OM 421A</b>	TF5168	TF8016	TF2156 TF2156-2 (z)
<b>Commandor/Dominator 116 CS</b>	<b>DB OM 422</b>	TF5168	TF8016	TF2156 TF2156-2 (z)
<b>Commandor/Dominator 228 CS</b>	<b>DB OM 433</b>	TF5165	TF8016	TF2156 TF2156-2 (z)
<b>Comet</b>	<b>Perkins 4.99</b>	TF5009	TF7004 or TF7022 TF8018	
<b>Comet</b>	<b>Deutz F4L812, F4L912</b>	TF4501	TF6054 or TF7022 TF8018	
<b>Compact</b>	<b>Perkins 4.154</b>	TF5002 TF4076	TF6054	
<b>Consul</b>	<b>Deutz F4L912</b>	TF4501	TF6054 or TF7022 TF8018	
<b>Consul</b>	<b>Deutz F6L912</b>	TF4057	TF6054 or TF7023 TF8016	
<b>Consul</b>	<b>DB OM 314</b>	TF5091	TF6054	
<b>Consul</b>	<b>Perkins 4.236</b>	TF4076 TF5002	TF7022 or TF7023 TF8018	
<b>Cosar</b>	<b>Perkins 4.236</b>	TF5010-1 TF4076	TF5004 or TF7023 TF8016	
<b>Cosar</b>	<b>Deutz F4L812, F4L912</b>	TF4501	TF6054 or TF7022 TF8018	
<b>Cosmos</b>	<b>Deutz F4L812, F4L912</b>	TF4501	TF6054 or TF7022 TF8018	
<b>Cosmos</b>	<b>Perkins 4.236</b>	TF5010-1 TF4076	TF5004 or TF7023 TF8016	
<b>Cosmos</b>	<b>Perkins 4.270D</b>	TF5002	TF7022 TF8018	

q - partly  
z - inner filter

02.03.2007



COMBINED HARVESTER MODEL	ENGINE TYPE	OIL FILTER	FUEL FILTER	AIR FILTER
<b>Gigant</b>	<b>Perkins 6.354</b>	TF5010-1	TF7022 TF8018 or TF7023 TF8016	
<b>Gigant</b>	<b>Deutz FL6L912</b>	TF4057	TF6054	
<b>Dominator 38 S</b>	<b>Perkins 4.236</b>	TF4076	TF6054	TF2104-1
<b>Dominator 38 S</b>	<b>Deutz F4L912</b>	TF4501	TF6054	TF2104-1
<b>Dominator 48 S</b>	<b>Perkins 4.236</b>	TF4076	TF6054	TF2104-1
<b>Dominator 56</b>	<b>Perkins 4.248</b>	TF4085	TF6054	TF2198 TF2198-2 (z)
<b>Dominator 58 S</b>	<b>Perkins 4.248</b>	TF4076	TF6054	TF2104-1
<b>Dominator 58 S Special</b>	<b>Perkins 6.354.4</b>	TF4085	TF6054	TF2198 TF2198-2 (z)
<b>Dominator 66</b>	<b>Perkins 6.354</b>	TF4085	TF6054	TF2198 TF2198-2 (z)
<b>Dominator 68, 68 R, 68 S</b>	<b>OM 352</b>	TF5174 (→916577) TF5166 (916587→)	TF6054	TF2198 TF2198-2 (z)
<b>Dominator 68, 68 R, 68 S</b>	<b>Perkins 4.428</b>	TF4076	TF6054	TF2104-1
<b>Dominator 68, 68 R, 68 S</b>	<b>Perkins 6.354</b>	TF4085	TF6054	TF2198 TF2198-2 (z)
<b>Dominator 76, 76 H</b>	<b>DB OM 352</b>		TF6054	TF2198 TF2198-2 (z)
<b>Dominator 76</b>	<b>Perkins 6.372 or 372.4</b>	TF4085	TF6054	TF2198 TF2198-2 (z)
<b>Dominator 76</b>	<b>Perkins 6.354</b>	TF4085	TF6054	TF2198 TF2198-2 (z)
<b>Dominator 76 H</b>	<b>DB OM 352A</b>	TF4085	TF6054	TF2197 TF2197-2 (z)
<b>Dominator 78 S</b>	<b>DB OM 352</b>	TF5174 (→916577) TF5166 (916587→)	TF6054	TF2198 TF2198-2 (z)
<b>Dominator 78 S</b>	<b>DB OM 366A</b>	TF5174	TF6054	TF2197 TF2197-2 (z)
<b>Dominator 78 S</b>	<b>Perkins 1006.6</b>	TF4085	TFCV296 MPCV296	TF2198 TF2198-2 (z)
<b>Dominator 78 S</b>	<b>Perkins 6.354.4PR</b>	TF4085	TF6054	TF2198 TF2198-2 (z)
<b>Dominator 78 SL</b>	<b>DB OM 352A</b>	TF5084	TF6054	TF2197 TF2197-2 (z)
<b>Dominator 80</b>	<b>Perkins 6.372</b>	TF5010-1	TF6054	TF2198 TF2198-2 (z)
<b>Dominator 85</b>	<b>Perkins 6.372</b>	TF5010-1	TF6054	TF2198 TF2198-2 (z)
<b>Dominator 85</b>	<b>DB OM 352</b>		TF6054	TF2198 TF2198-2 (z)
<b>transmission</b>		TF4504		

z - inner filter

**M1.03**

02.03.2007



COMBINED HARVESTER MODEL	ENGINE TYPE	OIL FILTER	FUEL FILTER	AIR FILTER
Dominator 85, 85 H transmission	DB OM 352 A	TF5084 TF4504	TF6054	TF2197 TF2197-2 (z)
Dominator 86	OM 352A → 08701398	TF5084	TF6054	TF2197 TF2197-2 (z)
Dominator 86	Perkins 6.372 or 372.4	TF4085	TF6054	TF2198 TF2198-2 (z)
Dominator 86	Perkins 6.354.4	TF4085	TF6054	TF2198 TF2198-2 (z)
Dominator 86	DB OM 352		TF6054	TF2198 TF2198-2 (z)
Dominator 88 S	DB OM 352	TF5174 (→916577) TF5166 (916578→)	TF6054	TF2198 TF2198-2 (z)
Dominator 88 S	OM 352A	TF5084	TF6054	TF2197 TF2197-2 (z)
Dominator 88 S	Perkins 6.354.4	TF4085	TF6054	TF2198 TF2198-2 (z)
Dominator 88 S, SL	Perkins T6.354.4	TF4076	TF6054	TF2197 TF2197-2 (z)
Dominator 88 SL	DB OM 366A	TF5174	TF6054	TF2197 TF2197-2 (z)
Dominator 88 SL	Perkins 1006.6	TF4085	TFCAV296 MPCAV296	TF2198 TF2198-2 (z)
Dominator 88 SL	Perkins 1006.6T	TF4085	TFCAV296 MPCAV296	TF2197 TF2197-2 (z)
Dominator 96	Perkins T6.354.4	TF4085	TF6054	TF2197 TF2197-2 (z)
Dominator 96	DB OM 360		TF8016	TF2197 TF2197-2 (z)
Dominator 96	DB OM 352A	TF5084	TF6054	TF2197 TF2197-2 (z)
Dominator 98 S, SL	Perkins T6.354.4	TF4076	TF6054	TF2197 TF2197-2 (z)
Dominator 98 S	Perkins T60.60	TF4085	TFCAV296 MPCAV296	TF2197 TF2197-2 (z)
Dominator 98 S	Perkins 1006.6T	TF4085	TFCAV296 MPCAV296	TF2198 TF2198-2 (z)
Dominator 98 S, SL	DB OM 352A	TF5084	TF6054	TF2197 TF2197-2 (z)
Dominator 98 SL	DB OM 360	TF5174 (108586→)	TF8016	TF2197 TF2197-2 (z)
Dominator 98 SL	DB OM 366	TF5174	TF6054	TF2197 TF2197-2 (z, q)
Dominator 100	Perkins V8.605	TF4085	TF7022 TF8018	TF2197 TF2197-2 (z)

q - partly  
z - inner filter

M1.04

02.03.2007



COMBINED HARVESTER MODEL	ENGINE TYPE	OIL FILTER	FUEL FILTER	AIR FILTER
Dominator 105	DB OM 360		TF7023 TF8016	TF2197 TF2197-2 (z)
Dominator 105	Perkins V8.605	TF4085 TF5010-1 (q)	TF7022 TF8018	TF2197 TF2197-2 (z)
Dominator 106	DB OM 401.901, DB OM 421	TF5168	TF7023 TF8016	TF2197 TF2197-2 (z)
Dominator 106	Perkins V8.540	TF4085	TFCAV296 MPCAV296	TF2197 TF2197-2 (z)
Dominator 106	DB OM 360.930		TF7023 TF8016	TF2197 TF2197-2 (z)
Dominator 108 S	Perkins V8.540	TF4085	TFCAV296 MPCAV296	TF2197 TF2197-2 (z)
Dominator 108 SL	DB OM 366LA	TF5174	TF6054	TF2177 TF2177-2 (z)
Dominator 108 SL	DB OM 421	TF5174	TF7023 TF8016	TF2197 TF2197-2 (z)
Dominator 108 SL	DB OM 366LA → 09403257  09403257 →	TF5174	TF7023	TF2197 TF2197-2 (z) TF2156 TF2156-2 (z)
Dominator 118 SL	DB OM 441A	TF5168	TF7023 TF8016	TF2156 TF2156-2 (z)
Dominator 88 VX	Perkins 1006.60TW	TF4085	TFCAV296 MPCAV296	TF2177 TF2177-2 (z)
Dominator 88 VX	Perkins 1006.6T	TF4085	TFCAV296 MPCAV296	TF2197 TF2197-2 (z)
Dominator 98 VX	MB 366 LA	TF5174	TF6054	TF2197 TF2197-2 (z)
Dominator 98 VX	Perkins 1006.60TW	TF4085	TFCAV296 MPCAV296	TF2177 TF2177-2 (z)
Dominator 108 VX	DB OM 441A	TF5168	TF7023 TF8016	TF2156 TF2156-2 (z)
Dominator 108 VX	DB OM 366 LA	TF5174		TF2156 TF2156-2 (z)
Europa	Perkins 4.236	TF5010-1 or TF4076	TF5004 or TF7023 TF8016	
Europa	Perkins 4.270D	TF5002	TF7022 TF8018	
Europa	Deutz F4L812, F4L912	TF4501	TF6054 or TF7022 TF8018	
Europa	Ford	TF5007		
Jaguar 60 SF	Perkins 6.372 6/73 → 12/75	TF5010-1	TF6054	TF2197 TF2197-2 (z)
Jaguar 60 SF	DB OM 352 6/73 → 3/84		TF6054	TF2197 TF2197-2 (z)

q - partly  
z - inner filter

**M1.05**

Original manufacturers names and part numbers are quoted for reference purpose only and are not intended to infer that our replacement parts are used as original equipment. Tables contain partly reference pictures.

02.03.2007



COMBINED HARVESTER MODEL	ENGINE TYPE	OIL FILTER	FUEL FILTER	AIR FILTER
Jaguar 70 SF	DB OM 352A 1/75→5/84	TF5084	TF6054	TF2197 TF2197-2 (z)
Jaguar 70 SF	DB OM 401 1/75→5/84	TF5168	TF7022 TF8018	TF2197 TF2197-2 (z)
Jaguar 80 SF	Deutz F10L413 1/75→5/84	TF4074		TF2197 TF2197-2 (z)
Jaguar 675	DB OM 360 1/84→12/94	TF5174	TF7023 TF8016	TF2197 TF2197-2 (z)
Jaguar 680	DB OM 421 1/84→12/94	TF5165	TF7023 TF8016	TF2197 TF2197-2 (z)
Jaguar 682 S, 682 SL	Perkins TV8.540 1/84→12/94	TF4085	TFCV296 MPCV296	TF2156 TF2156-2 (z)
Jaguar 682 S, 682 SL	DB OM 441A 1/84→12/94	TF5168	TF7023 TF8016	TF2156 TF2156-2 (z)
Jaguar 685		TF5165	TF7022 TF8018	TF2156 TF2156-2 (z)
Jaguar 685, 685 SL	DB OM 421A 1/84→12/94	TF5165	TF7023 TF8016	TF2197 TF2197-2 (z)
Jaguar 690, 695 SL	OM 422A, DB OM 442A	TF5165	TF7023 TF8016	TF2281
Jaguar 800, 840 (1/93→)	DB OM 441, DB OM 402LA	TF5168	TF7023 TF8016	TF2156 TF2156-2 (z)
Jaguar 820	OM 441LA	TF5165	TF7023 TF8016	TF2281
Jaguar 830, 850, 870	DC OM 457 LA	TF5165 (q)	TF7500	
Jaguar 860, 880	OM 422LA	TF5165	TF7023 TF8016	
Jaguar 890	DC OM 502 LA	TF5507	TF7500	
Jaguar 900	DC OM 502 LA	TF5507	TF7500	
Jaguar 8550 C	DC OM 457 LA	TF5165 (q)	TF7500	
Lexion 405	Perkins 1006.6T	TF4076	TFCV296 MPCV296	
Lexion 410	Perkins 1006.6TA	TF4076	TFCV296 MPCV296	TF2156 TF2156-2 (z)
Lexion 415	Perkins 1006.6TA	TF4076	TFCV296 MPCV296	TF2156 TF2156-2 (z)
Lexion 420	DB OM 366LA	TF5227	TF7023 TF8016	TF2156 TF2156-2 (z)
Lexion 430	DB OM 366LA	TF5227	TF7023 TF8016	TF2156 TF2156-2 (z)
Lexion 440	Perkins 1306.9TA		TF7023 TF8016	TF2281
Lexion 450	DB OM 401LA	TF5165	TF7023 TF8016	TF2281
Lexion 460	DB OM 401LA	TF5165	TF7023 TF8016	TF2281
Lexion 480	DB OM 441LA	TF5165	TF7023 TF8016	TF2281
Lexion 480 (10/01→)	CAT C-12	TF4305		
Medion 310 (04/00→)	Perkins 1006.60TA	TF4076	TFCV296 MPCV296	

q - partly  
z - inner filter

**M1.06**

Original manufacturers names and part numbers are quoted for reference purpose only and are not intended to infer that our replacement parts are used as original equipment. Tables contain partly reference pictures.

02.03.2007



COMBINED HARVESTER MODEL	ENGINE TYPE	OIL FILTER	FUEL FILTER	AIR FILTER
Medion 320 (04/00→)	Perkins 1006.60TA	TF4076	TFCV296 MPCV296	
Medion340 (04/00→)	DC OM 906 LA	TF5530	TF7502	
Mega 202	DB OM 366A	TF5174	TF6054	TF2197 TF2197-2 (z)
Mega 202	Perkins 1006.6TA	TF4085	TFCV296 MPCV296	TF2197 TF2197-2 (z)
Mega 203	Perkins 1006.6TA	TF4085	TFCV296 MPCV296	TF2197 TF2197-2 (z)
Mega 203	DB OM 366A	TF5174	TF6054	TF2197 TF2197-2 (z)
Mega 204	DB OM 366LA	TF5174		TF2177 TF2177-2 (z)
Mega 204, 208	DB OM 366LA	TF5174		TF2156 TF2156-2 (z)
Mega 218	DB OM 441LA	TF5168	TF7023 TF8016	TF2156 TF2156-2 (z)
Matador	Claas LD 40	TF5064	TF7022 TF8018	
Matador	Perkins 4.270D	TF5002	TF7022 TF8018	
Matador	Perkins 6.354	TF5010-1	TF7022 TF8018 or TF7023 TF8016	
Matador	Deutz FL6L912	TF4057	TF6054	
Mercator 50	Perkins 4.236	TF5010-1 or TF4085	TF6054	
Mercator 50	Perkins 4.248	TF4076	TF6054	
Mercator 60	Perkins 6.354, 6.372	TF5010-1	TF7022 TF8018 or TF7023 TF8016	
Mercator 60	Deutz FL6L912	TF4057	TF6054	
Mercator 65	Perkins 6.354, 6.372	TF5010-1	TF7022 TF8018	
Mercator 70	Perkins 6.354, 6.372	TF5010-1	TF7022 TF8018	
Mercator 70	Deutz FL6L912	TF4057	TF6054	
Mercator 75	Ford 2704E	TF5009	TF7022 TF8018	
Mercator75	Ford 2704E	TF4085	TF6054	
Mercur	Perkins 4.270D	TF5002	TF7022 TF8018	
Mercur	Perkins 4.236	TF5010-1 or TF4076	TF7004 or TF7023 TF8016	
Mercur	Deutz F6L912	TF4057	TF6054 or TF7023 TF8016	
Mercur	Deutz F4L812, F4L912	TF4501	TF6054 or TF7022 TF8018	

z - inner filter

M1.07

02.03.2007



COMBINED HARVESTER MODEL	ENGINE TYPE	OIL FILTER	FUEL FILTER	AIR FILTER
Protector	Perkins 6.354	TF5010-1	TF7022 TF8018 TF7023 TF8016	
Protector	Deutz F4L812, F4L912	TF4501	TF6054 or TF7022 TF8018	
Protector	Deutz FL6L912	TF4057	TF6054	
Senator	Deutz F6L912	TF4057	TF6054 or TF7023 TF8016	
Senator	Perkins 6.354	TF5010-1	TF7022 TF8018 or TF7023 TF8016	
Senator	Deutz FL6L912	TF4057	TF6054	
Standard	Perkins 4.236	TF5010-1 or TF4076	TF7004 or TF7023 TF8016	
Standard	Perkins 4.270D	TF5002	TF7022 TF8018	
Standard	Claas LD 40	TF5064	TF7022 TF8018	
Targo C40, C50 (01/01→)	Perkins 1004-40	TF4076	TF6206	
Targo K50, K60, K70 (01/01→)	Perkins 1004-40T	TF4085	TF6206	
Standard	Claas LD 40	TF5064	TF7022 TF8018	

25.07.2008



COMBINED HARVESTER MODEL	ENGINE TYPE	OIL FILTER	FUEL FILTER	AIR FILTER
1520	Ford 2712E	TF5009 or TF4118	TF7004 or TFCAV296 or MPCAV296	
1530	Ford 2713E	TF5010-1 or TF4118	TF7004 or TFCAV296 or MPCAV296	
1530	Deutz F6L912	TF4057	TF6054	
1530	Perkins 6.354	TF4076	TFCAV296 or MPCAV296	
1540 AL	Ford 2704ET	TF5010-1 or TF4118	TFCAV296 or MPCAV296	
8030	Fiat 8061	TF4076 (u)	TFCAV296 or MPCAV296	TF2157V
8050	OM 352		TF8016	TF2157V
8050	Ford 2715E	TF5010-1	TF7021 or TFCAV296 or MPCAV296	TF2157V
8050	Fiat 8061	TF4076	TFCAV296 or MPCAV296	
8060	OM 352		TF8016	TF2157V
8060	Ford 2715E	TF5010-1	TF7021 or TFCAV296 or MPCAV296	TF2157V
8060	Fiat 8061	TF4076	TFCAV296 or MPCAV296	

u - 2 pcs

02.03.2007



COMBINED HARVESTER MODEL	ENGINE TYPE	OIL FILTER	FUEL FILTER	AIR FILTER
MD4		TF5064	TF7023	
MD5		TF5064	TF7023	
MDM		TF5064	TF7023	
MDL		TF5006	TF7023	
MDL 180		TF5006	TF7023	
M33.30		TF4501	TF6054	TF2182-1 TF2346
M33.60		TF4501	TF6054	TF2182-1 TF2346
M35.70		TF4057	TF6054	TF2177 TF2177-2 (z)
M35.80, Hydromat	Deutz F8L413	TF4057	TF6054	TF2177 TF2177-2 (z)
transmission cabin filter		TF4309		TF21156
M35.80, Hydromat	Deutz BF6L913	TF4109	TF6054	TF2177 TF2177-2 (z)
transmission cabin filter		TF4309		TF21156
M36.10, Hydromat		TF4109	TF6054	TF2177 TF2177-2 (z) TF21156
cabin filter				TF21156
M36.30, Hydromat		TF4109	TF6054	TF2177 TF2177-2 (z)
transmission cabin filter		TF4309		TF21156
M40/74 HTS	BF6L913C	TF4109	TF6054	TF2177 TF2177-2 (z)
M41/20	BF6M 1015	TF4109	TF6193	
M60	F4L310	TF4062	TF7022	
M60	F4L812	TF5127	TF7022	
M66	F4L812	TF5127	TF7022	
M66, S	F3L912, F4L912	TF4501	TF6054	
M80	F4L812	TF5127	TF7022	
M88	F4L812	TF5127	TF7022	
M88, S	F4L812	TF4501	TF6054	
M125 transmission	F6L912	TF4057 TF5032	TF6054	
M600		TF4501	TF6054	
M660		TF4501	TF6054	
M750	F3L912, F4L912	TF4501	TF6054	TF2182-1
M770	F3L912, F4L912	TF4501	TF6054	TF2182-1
M900	F4L912	TF4501	TF6054	TF2182-1

z - inner filter

**M1.10**

Original manufacturers names and part numbers are quoted for reference purpose only and are not intended to infer that our replacement parts are used as original equipment. Tables contain partly reference pictures.

15.06.2007



COMBINED HARVESTER MODEL	ENGINE TYPE	OIL FILTER	FUEL FILTER	AIR FILTER
<b>M900</b>	<b>F5L912</b>	TF4057	TF6054	TF2104-1
<b>M922</b>	<b>F4L912</b>	TF4501	TF6054	TF2182 TF2198 TF2198-2 (z)
<b>M980</b>	<b>F4L912</b>	TF4501	TF6054	TF2198 TF2198-2 (z)
<b>M1000</b>	<b>F4L812</b>	TF4501	TF6054	
<b>M1000 transmission</b>	<b>F6L912</b>	TF4057 TF5032	TF6054	
<b>M1002</b>	<b>F5L912</b>	TF4057	TF6054	TF2104-1 TF2198 TF2198-2 (z)
<b>M1080</b>	<b>F5L912</b>	TF4057	TF6054	TF2198 TF2198-2 (z)
<b>M1102 transmission</b>	<b>F6L912</b>	TF4057 TF5032	TF6054	
<b>M1200 transmission</b>	<b>F6L912</b>	TF4057 TF5032	TF6054	
<b>M1202 transmission</b>	<b>F6L912</b>	TF4057 TF5032	TF6054	
<b>M1300 Hydromat hydraulic</b>	<b>F6L912</b>	TF4057 TF4500	TF6054	TF2104-1
<b>M1300, M1300H</b>	<b>F6L913</b>	TF4057	TF6054	TF2197
<b>M1300, M1300H</b>	<b>BF6L913</b>	TF4109	TF6054	TF2197
<b>M1302, M1302H, H1302HA</b>	<b>F6L912, F6L913</b>	TF4057	TF6054	TF2197
<b>M1302HA</b>	<b>BF6L912, BF6L913</b>	TF4057	TF6054	TF2177 TF2177-2 (z)
<b>M1600, M1600 Hydromat, M1620H</b>	<b>F6L413, F8L413V</b>	TF4074	TF6054	TF2197 TF2179-2 (z) TF2177 TF2177-2 (z) TF21156
<b>cabin filter</b>				
<b>M2385, M2480</b>	<b>F6L912</b>	TF4057	TF6054	TF2197 TF2179-2 (z) TF21156
<b>cabin filter</b>				
<b>M2580, M2680</b>	<b>F6L912/913</b>	TF4057	TF6054	TF2177 TF2177-2 (z) TF21156
<b>cabin filter</b>				
<b>M2685, M2780</b>	<b>BF6L913</b>	TF4057	TF6054	TF2177 TF2177-2 (z) TF21156
<b>cabin filter</b>				
<b>M3370 Farm-Liner</b>	<b>F4L912</b>	TF4501	TF6054	TF21200
<b>cabin filter</b>				
<b>M4030 Power-Liner</b>	<b>F6L912</b>	TF4057	TF6054	TF2197 TF2197-2 (z)

q - partly  
z - inner filter

**M1.11**

Original manufacturers names and part numbers are quoted for reference purpose only and are not intended to infer that our replacement parts are used as original equipment. Tables contain partly reference pictures.

08.01.2007



COMBINED HARVESTER MODEL	ENGINE TYPE	OIL FILTER	FUEL FILTER	AIR FILTER
<b>M4035 Power-Liner</b>	<b>BF6L913T</b>	TF4057	TF6054	TF2177 TF2177-2 (z)
<b>M4040 Star-Liner</b>	<b>BF6L913</b>	TF4109	TF6054	TF2177 TF2177-2 (z)
<b>M4045 Star-Liner</b>	<b>BF6L913</b>	TF4109	TF6054	TF2177 TF2177-2 (z)
<b>MH650</b>	<b>F8L413</b>	TF4057		TF2197 TF2197-2 (z)
<b>MSS 2.40 MSS/Grasliner</b>	<b>BF6L913C</b>	TF4109	TF6054	TF2177 TF2177-2 (z)
<b>MSS 2.40 MSS/Grasliner</b>	<b>BF6L913C</b>	TF4109	TF6054	TF2177
<b>SFH 3008, 3008A</b>	<b>F8L413F</b>	TF4109 TF4309 (1219235→)	TF6054	TF2197 TF2197-2 (z)
<b>SFH 4010, 4010A</b>	<b>F10L413F</b>	TF4109 TF4309 (1219235→)		TF2177 TF2177-2 (z)
<b>4060, 4065, 4075 H/HTS Topliner</b>	<b>BF6L913</b>	TF4109	TF6054	TF2177 TF2177-2 (z)
<b>4080 H/HTS Topliner</b>	<b>F8L513</b>	TF4057		TF2156 TF2156-2 (z)
<b>4090 H Topliner</b>	<b>BF8L513</b>	TF4057		TF2177 TF2177-2 (z)
<b>8 XL Topliner (1/98→)</b>	<b>BF6M1015C</b>	TF4109	TF6054	
<b>120 H Power-Press (1/98→)</b>	<b>BF6L913C</b>	TF4109	TF6054	TF2177 TF2177-2 (z)
<b>5670 H/HTS (6/99→)</b>	<b>190 kW/259 hv</b>	TF4057	TF6054	TF2281
<b>5680 H/HTS (6/99→)</b>	<b>206 kW/281 hv</b>	TF4057	TF6054	
<b>5690 HTS (6/99→)</b>	<b>235 kW/320 hv</b>	TF4057	TF6054	

z - inner filter

02.03.2007



COMBINED HARVESTER MODEL	ENGINE TYPE	OIL FILTER	FUEL FILTER	AIR FILTER
5160C	11/02→		DFP556287	
5180C	10/01→		DFP556287	
5220	11/99→	TF4057	TF6054	
5250	11/99→	TF4057	TF6054	
6280C	11/02→	TF4057	TF6054	
6300	11/99→	TF4109		
6330	11/99→	TF4109		
8300	09/01→	TF4109		
8350	09/00→	TF4109		

25.07.2008



COMBINED HARVESTER MODEL	ENGINE TYPE	OIL FILTER	FUEL FILTER	AIR FILTER
330	Perkins 6.354	TF4503	TFCAV296 or MPCAV296	TF21001
430, 530, 630, 730		TF4503	TFCAV296 or MPCAV296	TF21005
730		TF4076	TF7015 or TFCAV296 or MPCAV296	
925		TF4503	TFCAV296 or MPCAV296 (q)	TF21001
930		TF4503	TFCAV296 or MPCAV296 (q)	TF2104-1
932		TF4503	TFCAV296 or MPCAV296 (q)	TF21001
935, 940, 942, 945		TF4503	TFCAV296 or MPCAV296 (q)	TF2104-1
948, 950		TF4503	TFCAV296 or MPCAV296 (q)	TF2198 TF21003
952		TF4503	TFCAV296 or MPCAV296	TF2197 TF2197-2 (z) TF2198 TF2198-2 (q, z)
955, 960		TF4503	TFCAV296 or MPCAV296 (q)	TF21003 (q)
965, 965H	TF4503		TF2179 (→015187)	
968H	TF4503			
970	TF4503	TFCAV296 or MPCAV296 (q)	TF21003 (q)	
975	TF4503			
975	TF4503		TF2177 TF2177-2 (z) (015188→)	
985	403755	TF4503		TF2177 TF2177-2 (z)
985H 4 (Hydro 4)	TF4503	TFCAV296 or MPCAV296		TF2177 TF2177-2 (z) TF21005
1035, 1042	TF4503			TF2104-1
1052	TF4503			TF2198 TF2198-2 (z)
1055	TF4503			
1068H	TF4503			TF2197 TF2197-2 (z)
1133, 1144	TF4503			TF2104-1
1155	TF4503			TF2198 TF2198-2 (z)
1157	TF4503			TF2643
1158, 1166S, 1174S	TF4503			TF2197 TF2197-2 (z)
9450, 9540 IWTS, 9540 WTS, 9550, 9550 SH, 9560, 9560 IWTS, 9560 SH, 9560 WTS, 9580 IWTS, 9580 WTS		DFP550779		

q - partly  
z - inner filter



# MASSEY FERGUSON FILTERS



02.03.2007



COMBINED HARVESTER MODEL	ENGINE TYPE	OIL FILTER	FUEL FILTER	AIR FILTER
<b>MD630, S</b>		TF5009	TFCAV296 or MPCAV296	
<b>MF8</b>	<b>Perkins A4.236</b>	TF4076	TFCAV296 or MPCAV296	TF2168
<b>MF16</b>	<b>Perkins A4.236</b>	TF4076	TFCAV296 or MPCAV296	TF2168
<b>MF20</b>	<b>Perkins A4.248</b>	TF4076	TFCAV296 or MPCAV296	TF2168
<b>MF20 Turbo</b>	<b>Perkins AT4.248</b>	TF4085	TFCAV296 or MPCAV296	TF2279 TF2157-2 (z)
<b>MF25</b>	<b>Perkins</b>	TF4085	TF6206	
<b>MF30/32</b>	<b>620 DSL</b>	TF4302	TF6054 DFP556287	
<b>MF31</b>		TF5009	TFCAV296 or MPCAV296	
<b>MF36</b>	<b>612 DSL</b>	TF4160	DFP556287	
<b>MF38/40</b>	<b>612 DSIL</b>	TF4160	DFP556287	
<b>MF86, MF86-6</b>		TF5002 or TF5007	TFCAV296 or MPCAV296	TF2125 TF2125-2 (z)
<b>MF87, MF87-6</b>	<b>Perkins A4.236</b>	TF5002 or TF4076	TF7004 TF7015 or TFCAV296 or MPCAV296	
<b>MF87-6</b>	<b>Perkins A6.354</b>	TF5010-1 or TF4085	TFCAV296 or MPCAV296	
<b>MF99</b>	<b>Perkins A4.236</b>	TF5002 or TF4076	TF7004 TF7015 or TFCAV296 or MPCAV296	
<b>MF186</b>	<b>Perkins A4.212</b>	TF5002 or TF4076	TFCAV296 or MPCAV296	
<b>MF187-6</b>	<b>Perkins A6.354</b>	TF5010-1 or TF4085	TFCAV296 or MPCAV296	
<b>MF206</b>	<b>Perkins A4.236</b>	TF5002 or TF4076	TFCAV296 or MPCAV296	
<b>MF240</b>	<b>Perkins A4.236</b>	TF4076	TFCAV296 or MPCAV296	
<b>MF307</b>	<b>Perkins A4.236</b>	TF5002 or TF4076	TFCAV296 or MPCAV296	
<b>MF330</b>	<b>Perkins A4.236</b>	TF4076 (u)	TFCAV296 or MPCAV296 (u)	
<b>MF400</b>	<b>Perkins A6.354</b>	TF5010-1 or TF4085	TFCAV296 or MPCAV296	TF21005
<b>MF410SP</b>		TF5010-1 or TF4085	TFCAV296 or MPCAV296	TF21005
<b>MF430</b>	<b>Perkins A4.248</b>	TF4076 (u)	TFCAV296 or MPCAV296 (u)	
<b>MF440</b>	<b>Perkins A4.248</b>	TF4076	TFCAV296 or MPCAV296	TF2449
<b>MF487</b>		TF5005 or TF4076	TFCAV296 or MPCAV296	
<b>MF500</b>	<b>Perkins A6.354</b>	TF5010-1 or TF4085	TFCAV296 or MPCAV296	TF21005
<b>MF506</b>	<b>Perkins A4.248</b>	TF5002 or 5010-1 or TF4076	TFCAV296 or MPCAV296	

u - 2 pcs  
z - inner filter

## M1.15

Original manufacturers names and part numbers are quoted for reference purpose only and are not intended to infer that our replacement parts are used as original equipment. Tables contain partly reference pictures.

15.06.2007



COMBINED HARVESTER MODEL	ENGINE TYPE	OIL FILTER	FUEL FILTER	AIR FILTER
<b>MF507</b>	<b>Perkins</b>	TF5010-1 or TF4085	TFCAV296 or MPCAV296	TF21005 (q)
<b>MF510</b>	<b>Perkins</b>	TF5010-1 or TF4085	TFCAV296 or MPCAV296	TF21005 (q)
<b>MF510SP</b>		TF5010-1 or TF4085	TFCAV296 or MPCAV296	TF21005
<b>MF515</b>	<b>Perkins</b>	TF5010-1 or TF4085	TFCAV296 or MPCAV296	TF21005 (q)
<b>MF520</b>	<b>Perkins</b>	TF5010-1 or TF4085	TFCAV296 or MPCAV296	TF21005 (q)
<b>MF525</b>	<b>Perkins</b>	TF5010-1 or TF4085	TFCAV296 or MPCAV296	TF21005 (q)
<b>MF530</b>	<b>Perkins A6.354.4</b>	TF4076	TFCAV296 or (u) MPCAV296 (u)	
<b>MF535</b>	<b>Perkins A6.354.4</b>	TF4076	TFCAV296 or (u) MPCAV296 (u)	
<b>MF560</b>		TF4076	TFCAV296 or MPCAV296	TF2643
<b>MF590</b>	<b>Perkins A4.300</b>	TF5010-1 or TF4076	TFCAV296 or MPCAV296	
<b>MF620</b>		TF5010-1 or TF4085	TFCAV296 or MPCAV296	TF21005
<b>MF630, MF630S</b>		TF5009	TFCAV296 or MPCAV296 or TF7004 (q)	
<b>MF750</b>		F4085	TFCAV296 or MPCAV296	
<b>MF760</b>		TF4085	TFCAV296 or (u) MPCAV296 (u)	
<b>MF7272, 7274, 7276 (05/99→)</b>	<b>645 DSBIEL</b>		DFP556287	

q - partly  
u - 2 pcs



COMBINED HARVESTER MODEL	ENGINE TYPE	OIL FILTER	FUEL FILTER	AIR FILTER
10		TF5009	TF7021	
20, 25, 30, 35	Valmet 310, 311	TF5002	TFCAV296 / MPCAV296	TF2129
40	Valmet 411BL →10227	TF5002 (→10227) TF4501 (10228→)	TFCAV296 / MPCAV296	TF2162
310	Valmet 310BL, 311BL	TF5002	TFCAV296 / MPCAV296	TF2129
310	Valmet 310BL 1601g	TF4501	TFCAV296 / MPCAV296	TF2129
360	Valmet 310BL, 311BL	TF5002	TFCAV296 / MPCAV296	TF2129
360	Valmet 310BL 1601g	TF4501	TFCAV296 / MPCAV296	TF2129
410, 460	Valmet 411BL	TF4501	TFCAV296 / MPCAV296	TF2168
500	Valmet 311CL →8389	TF4501 (→8389) TF4136 (8390→)	TFCAV296 / MPCAV296	TF2168
580	Perkins A4.236	TF4076	TFCAV296 / MPCAV296	
580	Valmet 311DL	TF4136	TF6054	
600, 650	Valmet 411DL	TF4501	TFCAV296 / MPCAV296	TF2168
680	Perkins A4.248	TF4076	TFCAV296 / MPCAV296	TF2168
680	Valmet 411DL	TF4136	TF6054	TF2168
690	Valmet 411DSI	TF4136	TF6054	TF2279 TF2157-2 (z)
792, 892		TF5009	TF7021	
SR500	Valmet 311CL	TF4501	TFCAV296 / MPCAV296	
SR500	Valmet 320CL	TF4136	TFCAV296 / MPCAV296	
SR2020, SR2025	Valmet 420DL	TF4136	TFCAV296 / MPCAV296	TF2104
SR2035 hydraulic hydraulic	Valmet 420	TF4302 TF4351 TF4148	DFP556287	TF21087
SR2045	Valmet 420DL, 420DSL	TF4136	TFCAV296 / MPCAV296 or TF6054	TF21206
SR2050	Valmet 420DL, 420DSL	TF4135	TFCAV296 / MPCAV296 or TF6054	TF2279 TF2157-2 (z)
SR2055, SR2060	Valmet 620DL, 620DSL	TF4302	TFCAV296 / MPCAV296 or TF6054	TF2197 (→C2965) TF2364 TF2458-2 (z) (C2966→)
SR2065 hydraulic	6 cylinders	TF4302	TF6054	TF2364 TF2364-2 (z)
SR2075 TS cabin filter	Valmet 620	TF4351 TF4302	DFP556287 (u)	TF21206 TF21087
SR2085 cabin filter	6 cylinders	TF4302		TF21206 TF21087 (q)

u - 2 pcs  
q - partly  
z - inner filter

02.03.2007



COMBINED HARVESTER MODEL	ENGINE TYPE	OIL FILTER	FUEL FILTER	AIR FILTER
ST 257	Perkins 4.99	TF5009	TF7004	
S 280	Perkins 4.107	TF5009	TF7004	
S 800, S 830 cabin filter	Perkins 4.154	TF5002 or TF4500	TFCAV296 MPCAV296	TF2183 TF2150
S 840		TF4085 or TF4015	TFCAV296 MPCAV296	TF2183
S 900	Perkins 4.236	TF5002	TF7021	